



Roseate Development Associates

Nicol St. Residence

427, 449, 455 Nicol St. Nanaimo

Title
BUILDING ELEVATIONS - NW

MARK	MATERIAL
1	Concrete - Cast-in-Place - Smooth
2	Fibre Cement - Stone Gray - Planks
3	Fibre Cement - Baked Clay - Planks
4	Fibre Cement - Mountain Sage - Smooth
5	Fibre Cement - Night Gray - Smooth
6	Window Frame - Vinyl - Black
7	Aluminum - Powder Coated - Black



1 WEST ELEVATION
A301 1:100

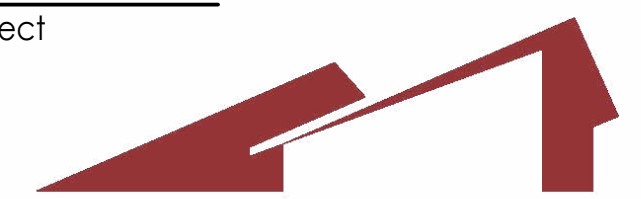


2 NORTH ELEVATION
A301 1:100



3 NORTH WEST CORNER
A301

RECEIVED
DP1318
2023-SEP-22
CURRENT PLANNING



roseate
DEVELOPMENT ASSOCIATES

Roseate Development Associates

Nicol St. Residence

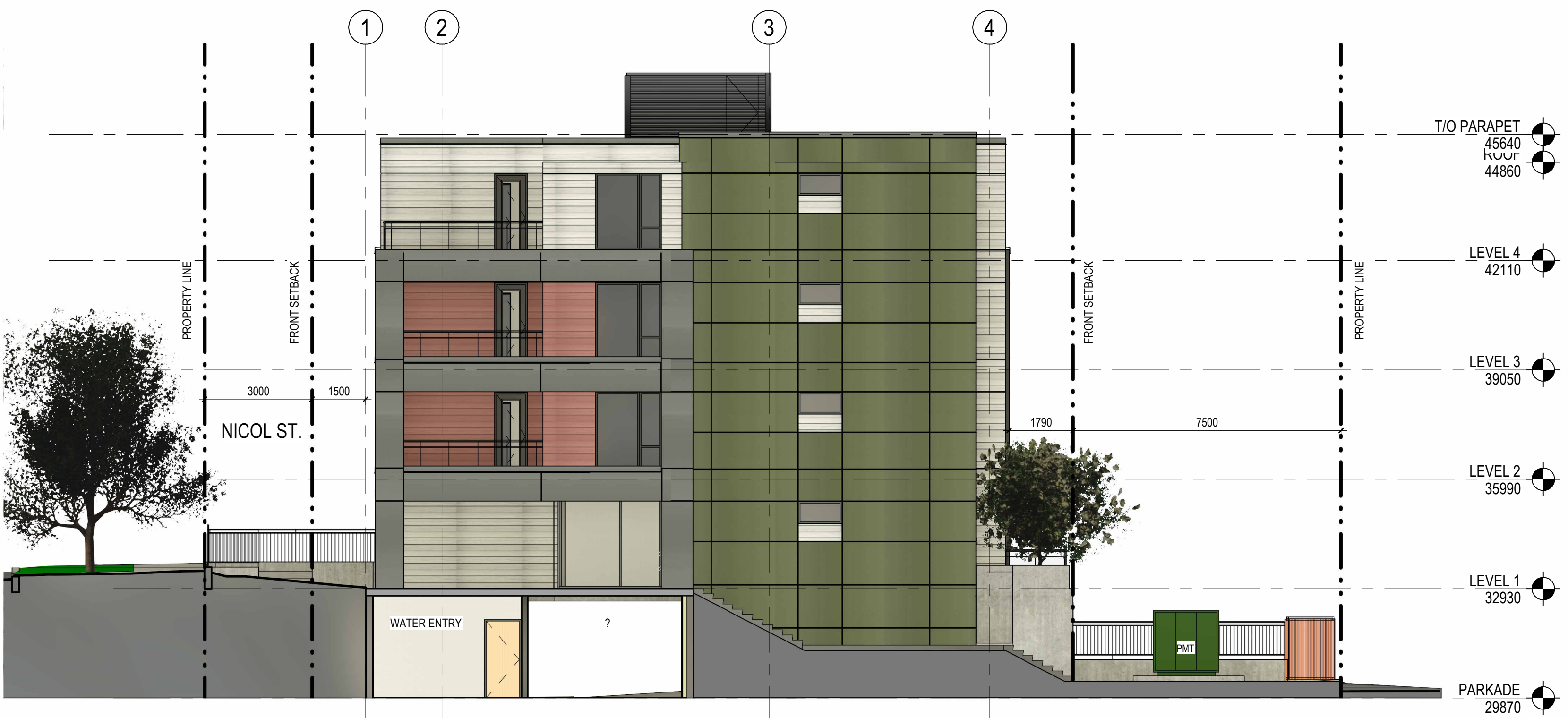
427, 449, 455 Nicol St. Nanaimo

Title
BUILDING ELEVATIONS - SE



MATERIAL SCHEDULE	
MARK	MATERIAL
1	Concrete - Cast-in-Place - Smooth
2	Fibre Cement - Stone Gray - Planks
3	Fibre Cement - Baked Clay - Planks
4	Fibre Cement - Mountain Sage - Smooth
5	Fibre Cement - Night Gray - Smooth
6	Window Frame - Vinyl - Black
7	Aluminum - Powder Coated - Black

1 EAST ELEVATION
A302 1 : 100



2 SOUTH ELEVATION
A302 1 : 100



3 SOUTH EAST CORNER
A302

RECEIVED
DP1318
2023-SEP-22
CURRENT PLANNING